

HYBRID FIRE

MatriX | 800/500 ST



Specifications

Exterior dimensions WxHxD in mm
1301 x 1057 x 598

Fire display WxHxD in mm
821 x 500

System
Log Burner 3.0

Decoration
Log set

Back walls
Back wall smooth steel

Remote
Via app and ITC Remote

Power
10,7 kW

Operating system
Honeywell

Energy label
B

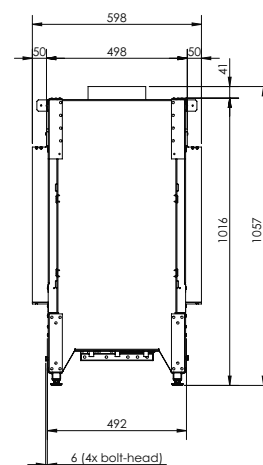
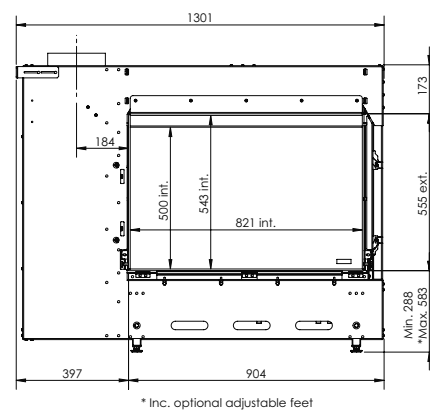
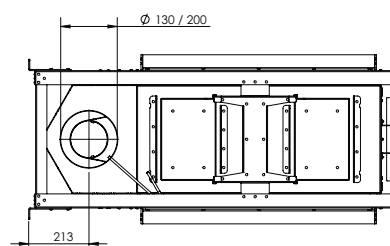
Options (at a surcharge)
HPL Module
Black glass back wal
Non-reflective glass
Adjustable feet

DECORATION OPTIONS



Heating functionality
Nee

Flue material
130/200



There is **so much to tell...**