

# MatriX | 450/650 II

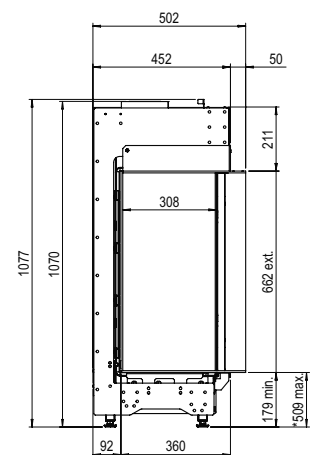
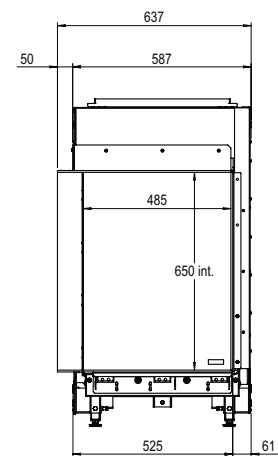
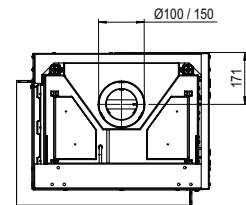


## DECORATION OPTIONS



**Heating functionality**  
Nee

**Flue material**  
100/150



\* Incl. optional adjustable feet

## Specifications

**Exterior dimensions WxHxD in mm**  
637 x 1077 x 502

**Fire display WxHxD in mm**  
485 x 650 x 308

**System**  
Log Burner 2.0

**Decoration**  
Log set

**Back walls**  
Back wall smooth steel

**Remote**  
Symax

**Power**  
6,8 kW

**Operating system**  
Mertik

**Energy label**  
A

**Options (at a surcharge)**  
ITC App  
Black glass back wal  
Non-reflective glass  
Symbio Module  
Wall bracket  
Adjustable feet

There is **so much to tell...**