

MatriX | 450/500 III

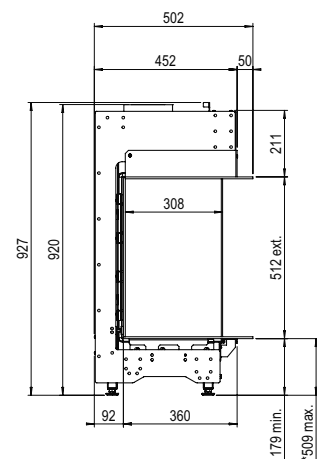
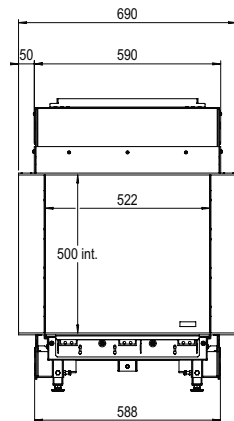
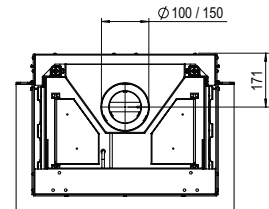


DECORATION OPTIONS



Heating functionality
Nee

Flue material
100/150



*Incl. optional adjustable feet



Specifications

Exterior dimensions WxHxD in mm
690 x 927 x 502

Fire display WxHxD in mm
522 x 500 x 308

System
Log Burner 2.0

Decoration
Log set

Back walls
Back wall smooth steel

Remote
Symax

Power
6,8 kW

Operating system
Mertik

Energy label
A

Options (at a surcharge)

ITC App
Black glass back wal
Non-reflective glass
Symbio Module
Wall bracket
Adjustable feet

There is **so much to tell...**