

HYBRID FIRE

# MatriX | 1050/650 III



## DECORATION OPTIONS

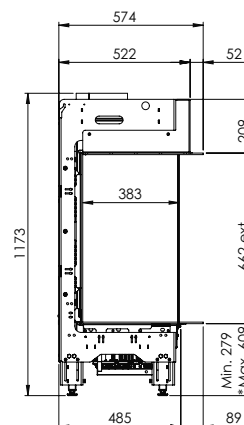
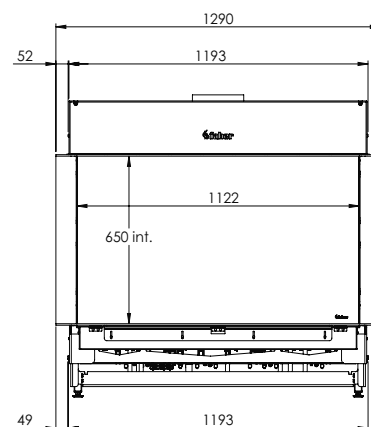
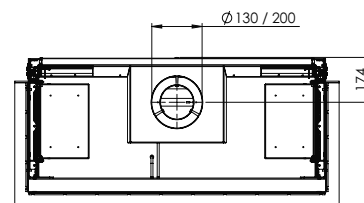


## Heating functionality

Nea

## Flue material

130/200



\* Incl. optional adjustable feet

## Specifications

**Exterior dimensions WxHxD in mm**  
1290 x 1173 x 574

**Fire display WxHxD in mm**  
1122 x 650 x 383

**System**  
Log Burner 3.0

**Decoration**  
Log set

**Back walls**  
Back wall smooth steel

**Remote**  
Via app and ITC Remote

**Power**  
10,1 kW

**Operating system**  
Honeywell

**Energy label**  
B

### Options (at a surcharge)

- Inset depth 30 mm
- Inset depth 100 mm
- HPL Module
- Black glass back wal
- Non-reflective glass
- Adjustable feet
- Wall bracket